

City of Port Angeles

New Regulations for Stormwater



Presentation
June 10, 2009

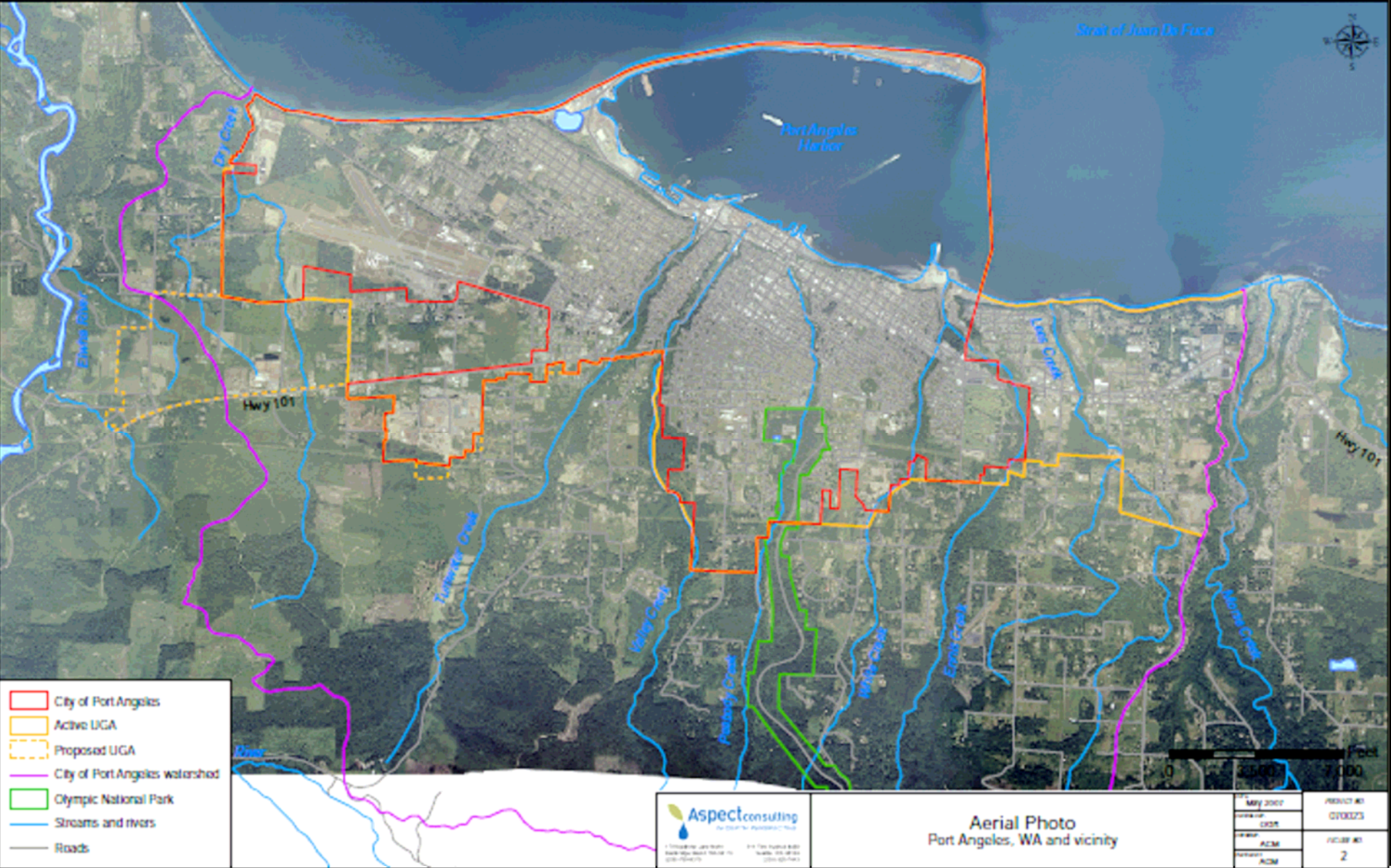
By Terri Partch, P.E.

Why is the City doing this???

- To improve water quality in the City for people and for the environment
- Because it's a State requirement



Port Angeles



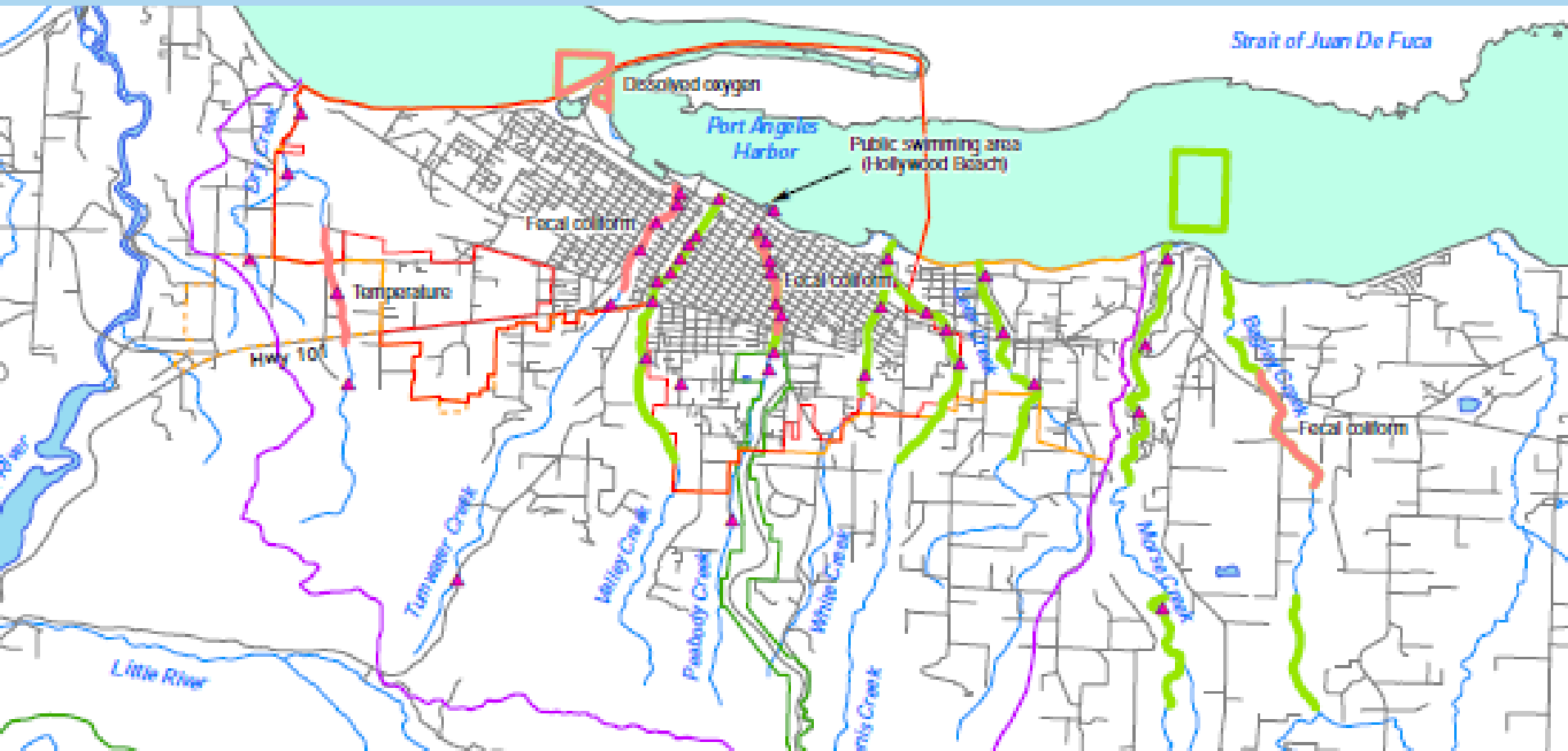
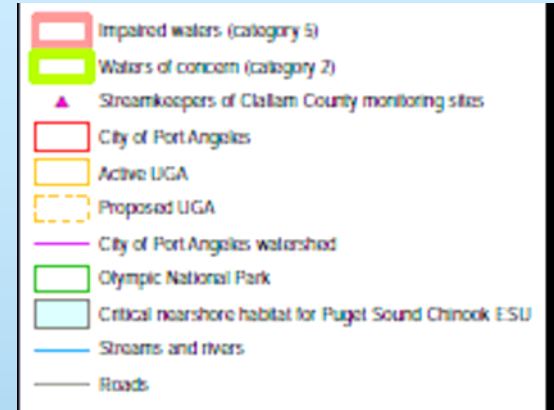
- City of Port Angeles
- Active UGA
- Proposed UGA
- City of Port Angeles watershed
- Olympic National Park
- Streams and rivers
- Roads



Aerial Photo
Port Angeles, WA and vicinity

DATE	MAY 2002	PROJECT NO.	0100023
CONTRACTOR	CWA	FIELD NO.	
PROJECT	ACM		
FIELD NO.			
			2

City Water Quality



Overview

- Three new programs are required by the NPDES Phase II Permit



» Construction Site Runoff



» Public and Private System Operations and Maintenance



» Illicit Discharge Detection and Elimination

Construction Site Runoff Requirements

New Requirements for Sites that Disturb **1 Acre or More**

- Development of Stormwater Site Plan and Permanent Stormwater Control Plan
- Preparation of a Construction Stormwater Pollution Prevention Plan (SWPPP)
- Source control Best Management Practices (BMPs) must be applied
- Stormwater must be managed on site, unless the developer can show that flooding or erosion will occur

Construction Site Runoff and Operations and Maintenance Requirements

New Requirements for Sites that Disturb 1 Acre or More

- Runoff Treatment (four levels – basic, enhanced, oil and phosphorous)
- Flow Control – flow off the site must be limited to flow from the site in a forested condition (exception for some redevelopment)
- Wetland Protection – Discharges to wetlands must maintain the existing hydrologic conditions, hydrophytic vegetation and substrate characteristics
- All new treatment and flow control facilities must be maintained to the DOE standards and schedule

Construction Site Runoff and Operations and Maintenance Requirements

Existing City Requirements for Sites that Disturb **Less Than 1 Acre:**

- Preparation of a plans for both temporary and permanent measures to control stormwater
- Flow control for projects that will cause the capacity of the downstream pipe system to be exceeded
- If it is in the best interest of the public, runoff treatment may be required.
- Maintenance schedule for all permitted flow control and treatment facilities to include maintenance activities, schedule and person responsible. Schedule must be recorded with the plat

Low Impact Development Incentives

**Incentive Program for Projects which Disturb
Less than 1 acre (or already have LID in place!)**

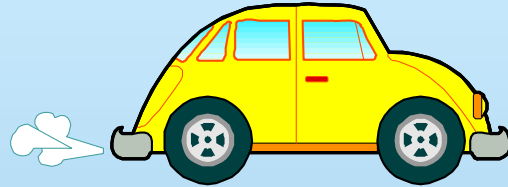


Developer/owner does two of the following:

- Implements roof downspout controls
- Mitigates for 10% of the pollution generating impervious surface on the site by installing flow dispersion BMPs, preserving natural vegetation or by installing LID techniques.
- Developer amends the soil as recommended in BMP - T5.13 to absorb potential runoff

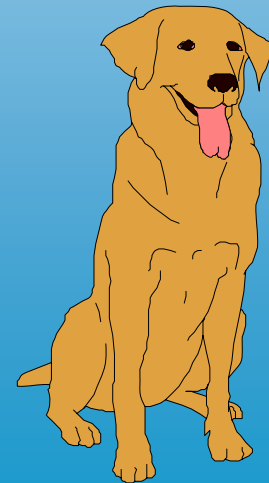
The City would then reduce the stormwater fee for the site by 25%, per year

Prohibition of Illicit Discharges



Essentially, only rainwater is allowed.

All other discharges are either specifically conditioned, or not allowed.



Prohibition of Illicit Discharges

NOT PROHIBITED

- Diverted streams
- Rising groundwater
- Foundation drains
- Footing drains
- Crawl space pumps
- Springs
- Flows from wetlands
- Fire-fighting activities

CONDITIONED

- Waterline and fire hydrant flushing
- Swimming pool discharges
- Lawn watering and irrigation runoff
- Street, sidewalk, or building wash water
- Other, as determined per SWPPP submitted to the City

Stormwater Discharge Permits

New Stormwater Discharge Permits for:

- a. draining water from a chlorinated water source
- b. car washes that are not permitted as a commercial or industrial use
- c. new development or redevelopment that doesn't require a building permit, but discharges water to the City's storm sewer system

Escalating Enforcement Measures

- Education and Outreach
- Stop Work Orders
- Water Shut Off
- Revocation of Permits
- Notice of Violation-Civil Penalties

New Stormwater Fees

Inspection Fees

- Stormwater inspections during construction
- Annual inspections of private facilities

Maintenance Fees

- Owner maintains facility – no City fee
- If maintenance neglected – City must enforce, at owner expense.
- If City takes over facility – maintenance fee will be paid by owner/developer.

Stormwater Acronyms & Definitions



NPDES Permit – National Pollutant Discharge Elimination Permit

SWPPP – Stormwater Pollution Prevention Plan – Plan to control erosion off of construction sites larger than 1 acre

BMP – Best Management Practices – Activities or structural solutions to prevent pollutants from entering stormwater

Source Control BMP – An activity done to prevent pollutants from entering stormwater. An example is a drip pan placed under a car when changing the oil.

Flow Control - A requirement to control both the volume and rate of release of stormwater to prevent stream erosion.

LID – Low Impact Development –Practices like rain gardens and permeable pavement which allow rainwater to infiltrate on the site.

Illicit Discharges - Any non stormwater discharge into the City's stormwater system

1-800-909-3677 | CUSTOMER SERVICE | 

HOME : PRODUCTS : CUSTOMER SERVICE : ABOUT US : HOW TO BUY

PRODUCT FINDER

StreamGuard™ Stormwater Protection → Car Wash Kit → SudSafe™ Car Wash Kit

SEARCH 

CATEGORIES INDEX

- > Absorbents
- > Containment Berms
- > Drums & Accessories
- > Eagle® Safety Cabinets
- > Extreme IZ Kits
- > Facility Maintenance
- > First Responders
- > Fuel & Water Storage
- > Military Products
- > Outdoor Storage
- > Pelican™ Products
- > PowerFlare® Safety Lights
- > Spill Containment
- > Spill Kits
- > StreamGuard Stormwater Protection
 - > Drain Protectors
 - > Erosion Control
 - > StreamGuard™ Stormdrain Inserts
 - > Stormdrain Accessories
 - > Spill Berms
 - > Car Wash Kit
- > Traffic Safety
- > NEW Products
- > Sale/Clearance
- > GSA Contract Products



View larger image

SudSafe™ Car Wash Kit

 E-mail this product to a friend

Item # 92-K0166

Storm drains convey water through the public storm water system to the nearest stream or lake without treatment. It is important to keep vehicle wash water from entering storm drains because detergents, oils, and heavy metals can be toxic to aquatic life. The SudSafe™ car wash kit captures wash water before it enters the storm drain and pumps it to either a grassy area or sanitary sewer. Using this kit helps to protect the quality of water in your community.

Easy to use:

- Simply remove grate with hook
- Place tub into catch basin
- Set up safety cones
- Attach hose and GFCI cord
- Place pump into tub
- Drain hose to sewer, sink or ground area

Contents: Tub w/ gasket, pump, grate hook, hose, GFCI shock protection cord, extension cord, 2 safety cones, instruction sheet, storage bag

SudSafe™ Car Wash Kit

SKU:	92-K0166
Dimensions:	18" x 24" x 10"
Weight:	45 LBS.
Price:	\$410.00
6+ Price	\$378.00

Quantity: 1 