

# Dry Creek Bridge and Trail Planning

- Planning Project to:
  - Design 4 miles of trail
    - Railroad grade right-of-way
  - Design Dry Creek Bridge
    - Geotechnical issues
  - Construction Estimates
  - Permit Preparation

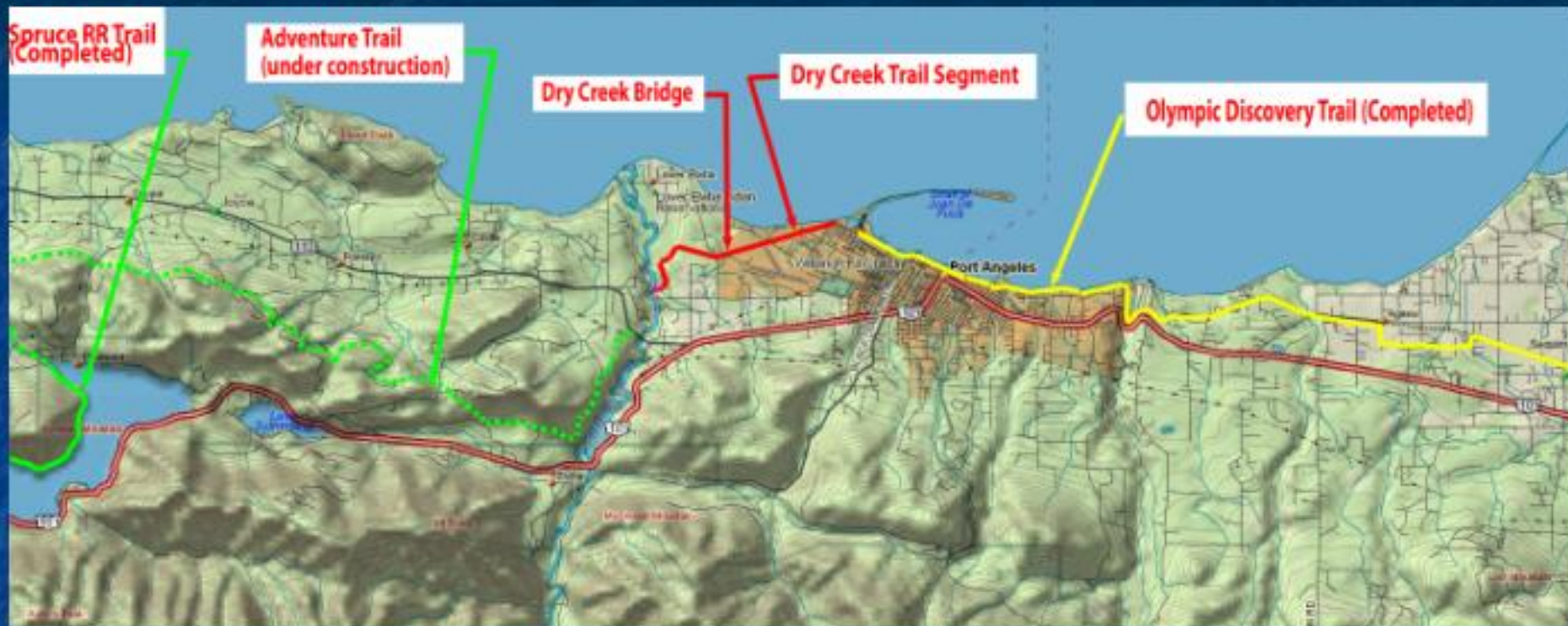


This is a planning project for a critical trail segment on the North Olympic Peninsula. The project covers the engineering and planning effort for 4 miles of trail, including a difficult bridge crossing, and other work needed prior to construction.

# Need for Dry Creek Trail

1. Access Natural Areas West of PA
2. Increase Safety for Bicycle Trekkers
3. Increase Quality of Travel Experience
4. Extend Regional Trail System
5. Need Reflected in Public Plans/Comments

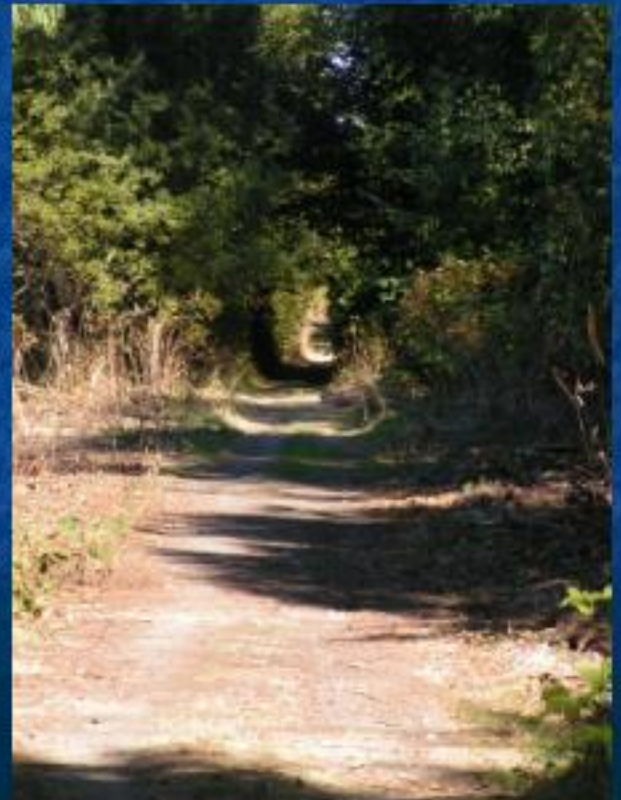
## Satisfy Need



- The Dry Creek Bridge and Trail Segment
  - Provides Connectivity to the Olympic Peninsula West End
  - Accesses the Elwha lower canyon from downtown Port Angeles
  - Provides an alternative to the shoulders of Hwy 101

# Fulfilling the Need - Route

- Railroad Grade Selection
  - 4 miles from Ediz Hook to Elwha River Bridge
  - Owned by City of Port Angeles
  - Best possible grade
  - Most direct route for the most people
  - 100 foot right-of-way, flexible use



## Fulfilling the Need – Access

- Route provides needed access
- Elwha River recreation area
  - Fishing and kayaking
- New Elwha River trail crossing
  - West Clallam County
    - Adventure Trail
    - Olympic National Park Spruce Railroad Trail



Lower Elwha from railroad grade

## Fulfilling the Need - Connectivity

- City is providing connector trail to:
  - Port Angeles Waterfront Trail
  - Ediz Hook Trail
- Extended connection eastward to service areas:
  - Olympic Discovery Trail completed segments
  - Larry Scott Trail (Port Townsend)
  - Pacific North West Trail (to Montana)



# Fulfilling the Need - Character

- The Dry Creek Trail Segment
  - Provides a beautiful, natural corridor out of the city
  - Proceeds through second growth timber
    - Protected by 100 foot green belt
  - Descends into the Elwha River Valley
  - Ends at river edge in the lower canyon



# Fulfilling the Need - Design

- Designed for Multi-Users and Heavy Use
  - Hard surface, 10 feet wide
    - Allows abreast walking and riding
    - Okay for road bikes (skinny tires)
    - Allows bike passing
    - Minimizes maintenance
  - Separate Horse Trail
    - Soft surface
    - In county only



**Finished area on Olympic Discovery Trail**

## Readiness to Proceed

- Preliminary arrangements complete
  - Public Review process
  - Right-of-way owned by City
  - City/County Interlocal Agreement approved
  - Right-of-way survey completed (5 miles)
- Goal is to start as soon as possible
  - Preliminary cost estimates by May 2006
  - Support 2006 Development Proposal
  - Construction in 2007
  - Open in 2008

We are prepared for a rapid startup to support estimates for a 2006 development proposal and trail opening early in 2008

Natural

# Views Along the Route



**Railroad Grade (0.0 mi)**



**Railroad Grade (0.1 mi)**

# Views Along the Route



Natural

# Views Along the Route

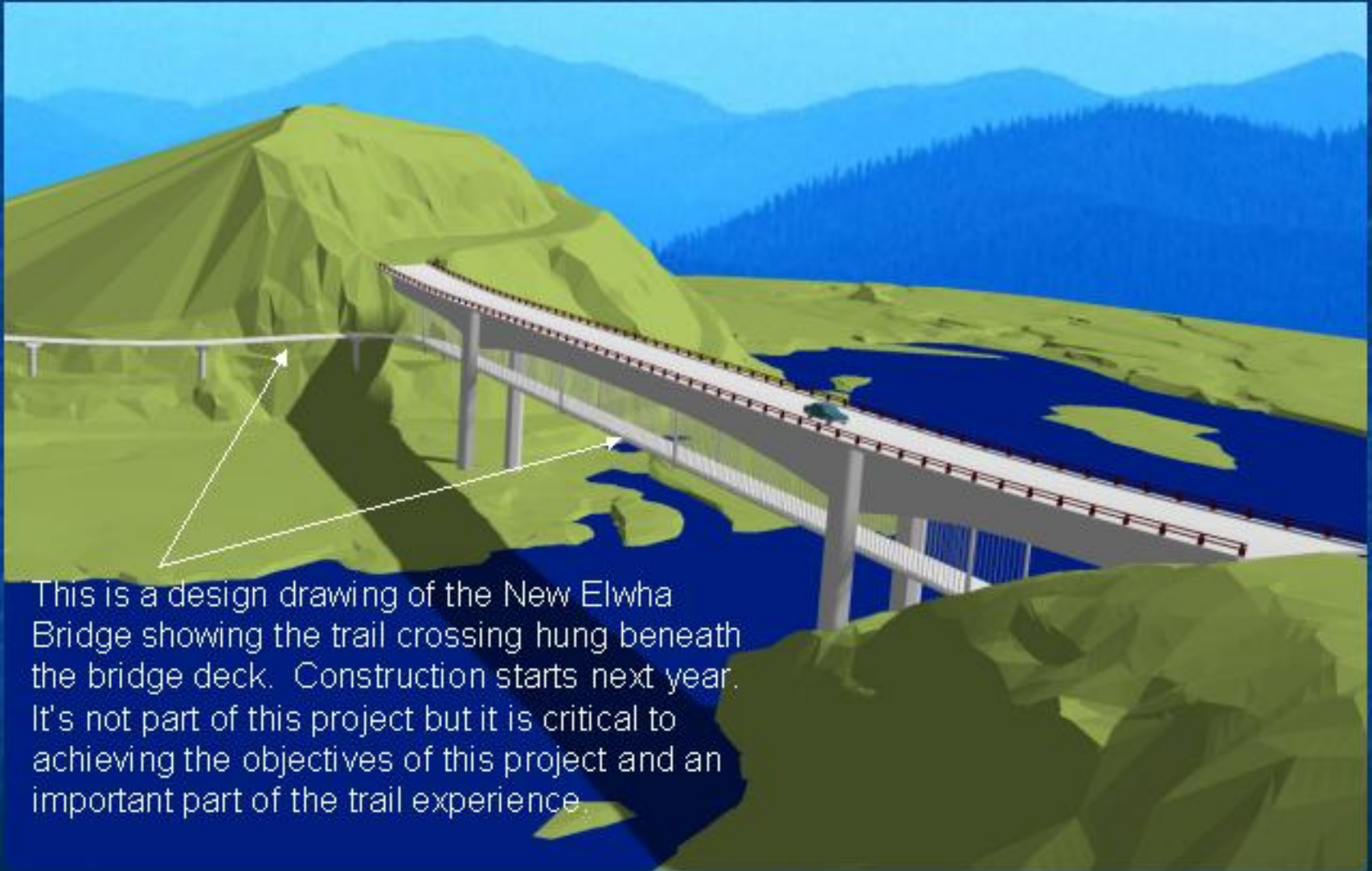


**From Rim of Elwha Valley  
(2.6 mi)**



**Railroad Grade descent to  
Elwha (2.8 mi)**

# Views Along the Route



This is a design drawing of the New Elwha Bridge showing the trail crossing hung beneath the bridge deck. Construction starts next year. It's not part of this project but it is critical to achieving the objectives of this project and an important part of the trail experience.

# Contact Information

Any questions? Please feel free to contact:

Bill Sterling, Deputy Director of Recreation

City of Port Angeles

Phone: 360-417-4551

Email: [wsterling@cityofpa.us](mailto:wsterling@cityofpa.us)

Website: [www.cityofpa.us](http://www.cityofpa.us)